



Republic Brass Sales, Inc.
 619.229.8304
 6566 Federal Blvd
 Lemon Grove, CA 91945
 www.republicbrasssales.com

FLANGE CHART

200# BUTTERFLY

Specification: NAVSEA DWG 810-4715319

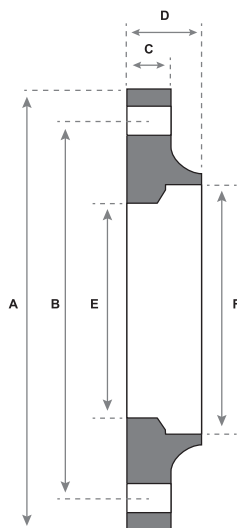
Fig 2C (SW)

NAVSEA DWG 803-6983512

Fig 26-D / 31-D (SW)

NAVSEA DWG 810-1385892 (SB)

Flange Drilling: ANSI B16



Butterfly

SERVICE RATING TABLE		
FIGURE	SIZE	WOG
Butterfly	2 to 14	200 PSI at 180° F
	14, 16, 18	50 PSI at 150° F

200# BUTTERFLY FLANGES									
SIZE	RBS P/N	A	C	B (Bolt Circle)	D	E	F MIN / MAX	No of Holes	Drill Size
2"	FLBXY200-400	6	1/2	4 3/4	1	2.067	2.380 / 2.426	4	11/16
2 1/2"	FLBXY200-450	7	9/16	5 1/2	1 1/16	2.469	2.880 / 2.931	4	11/16
3"	FLBXY200-500	7.5	5/8	6	1 1/8	3.068	3.505 / 3.560	4	11/16
3 1/2"	FLBXY200-550	8.5	23/32	7	1 5/16	3.548	4.005 / 4.060	8	11/16
4"	FLBXY200-600	9	11/16	7 1/2	1 5/16	4.026	4.505 / 4.565	8	11/16
5"	FLBXY200-700	10	3/4	8 1/2	1 1/2	5.047	5.568 / 5.628	8	13/16
6"	FLBXY200-800	11	13/16	9 1/2	1 11/16	6.065	6.630 / 6.690	8	13/16
8"	FLBXY200-900	13.5	15/16	11 3/4	1 15/16	7.981	8.630 / 8.690	8	13/16
10"	FLBXY200-1000	16	1	14 1/4	2 1/8	10.020	10.755 / 10.815	12	15/16
12"	FLBXY200-1100	19	1 1/16	17	2 5/16	11.938	12.755 / 12.815	12	15/16
14"	FLBXY200-1200	21	1 3/16	18 3/4	2 9/16	13.250	14.005 / 14.065	12	1 1/16

Replace X with the following codes for Material:

Cuni 70/30 - 7
 Cuni 90/10 - 9
 Bronze- B

Replace Y with the following codes for Type:

Socket Weld - SW
 Silver Brazed - SB

